



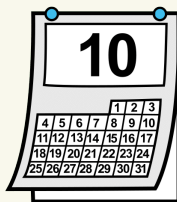
MUSEO ETNOLÓXICO

Dúo Pedro Pascual e Germán Díaz



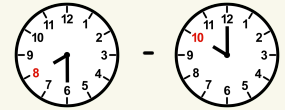
i Concerto de acordeón e zanfona con motivo do Día Internacional da Música.

Información sobre horarios



7/10/2022

Horario de tarde:

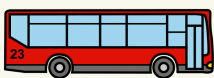


Información de localización

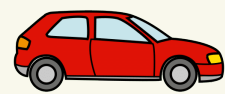


Enderezo: Rúa de Santiago, 16, 32400 Ribadavia

Como se podería chegar ata alí?



Liñas: Ourense- Ribadavia
Horario: 19:30h



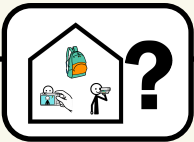


Información de billetes

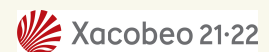
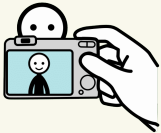
Prezo normal: de balde



Información sobre as instalacións



Información sobre accións permitidas



This PDF was generated by the CIMA (Cultural Information Made Accessible) web tool developed by the ALLURE - Literacy for Freedom project (2020-1-ES01-KA204-082720), funded by the European Community Erasmus+ KA204 program. The partners of this project are: Regional Ministry of Culture, Education and University of the Xunta de Galicia (Spain), Icelandic Textile Centre (Iceland), Workshops of culture in Lublin (Poland), Associação Business of Portugal and University of Vigo (Spain). More info and contact: <https://allureculture.eu/>.

The pictographic symbols used are the property of the Government of Aragón and have been created by Sergio Palao for ARASAAC (<http://www.arasaac.org>), that distributes them under Creative Commons License BY-NC-SA.

This publication [communication] reflects the views only of the author, and the Commission cannot be held responsible for any use which may be made of the information contained therein.



Co-funded by the
Erasmus+ Programme
of the European Union